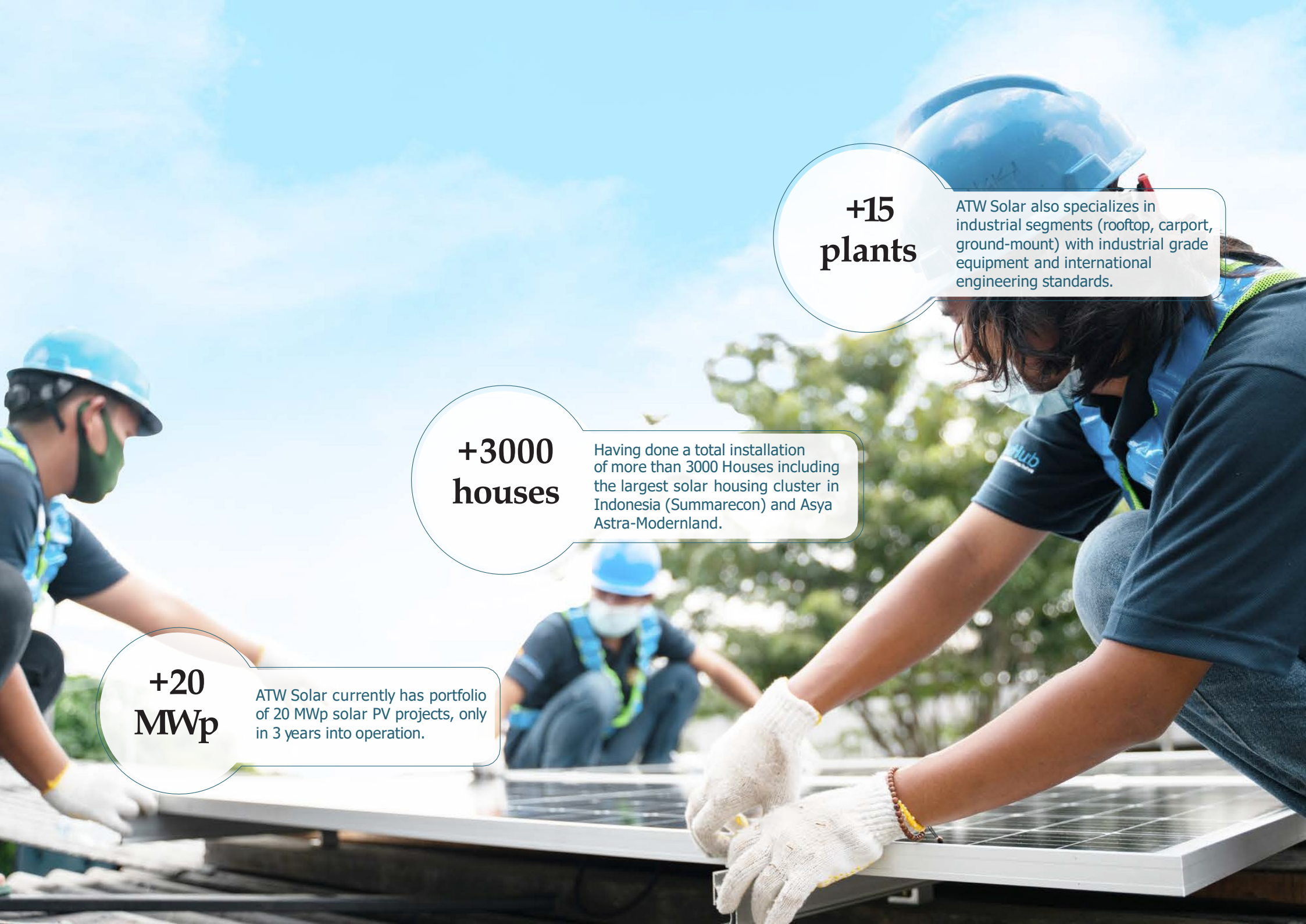




Making Everyone Energy Independent Powered by the Sun

Company Profile



**+15
plants**

ATW Solar also specializes in industrial segments (rooftop, carport, ground-mount) with industrial grade equipment and international engineering standards.

**+3000
houses**

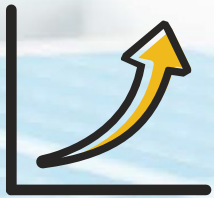
Having done a total installation of more than 3000 Houses including the largest solar housing cluster in Indonesia (Summarecon) and Asya Astra-Modernland.

**+20
MWp**

ATW Solar currently has portfolio of 20 MWp solar PV projects, only in 3 years into operation.

Vision

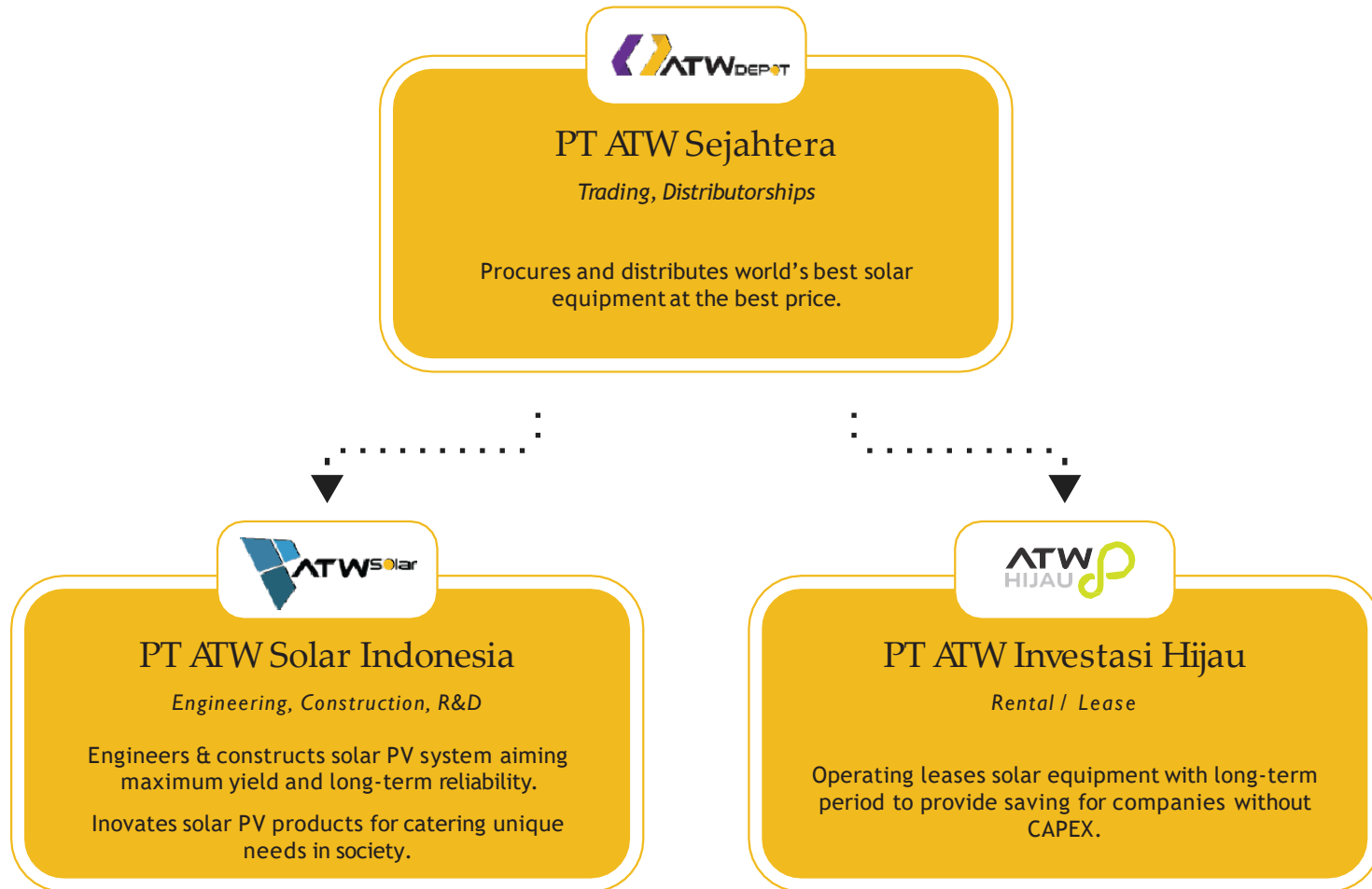
ATW Solar envisions energy independence for everyone by the power from the sun.



Exponential
Growth 20 MWp
Solar PV Projects
only in 3 years into operation.

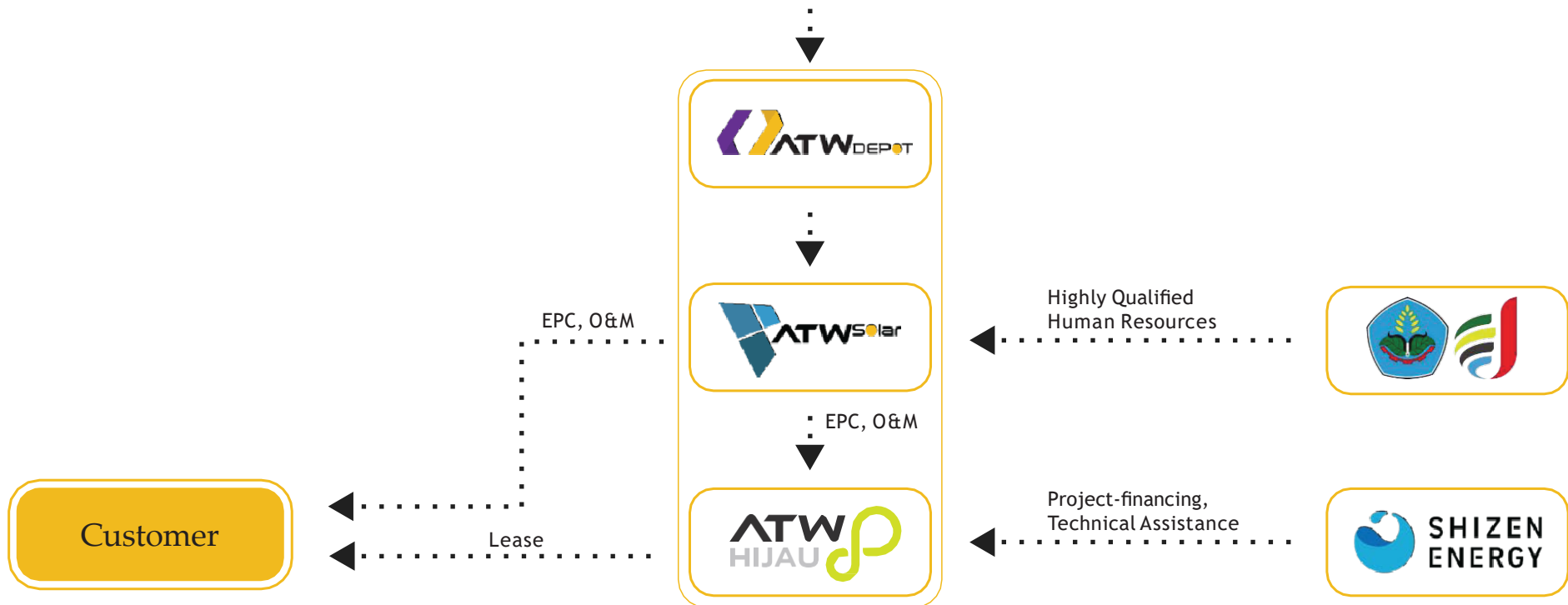


Integrated Company Structure



Business Flow Chart

Distributor, Marketing, Support



Key Advantage



EPC

High Savings

- Proven over-performing results
- Pro-active after sales service
- No inflation in utility price



Rental

No Capex

- Zero upfront investment
- Zero operation and maintenance risk
- Immediate benefit from day one

Benefits and Drawbacks for Customers

	EPC	Rental
Upfront Investment	Done by customer	Done by ATW Investasi Hijau
Main Benefit	Full saving enjoyed by customer	Smaller saving enjoyed by customer
Solar Electricity Cost Inflation	No inflation	Following PLN inflation
Saving (Revenue)	Fully enjoyed by customer	Shared with ATW Investasi Hijau to cover its investment risk and interest
Payback	Typically 7-9 years	No payback as there is no investment
Ownership	Right away after EPC completes	After rental contract matures (20-30 years)
System Performance Risk	At customer's side	At ATW Investasi Hijau's Side
O&M Responsibility	At customer's side	At ATW Investasi Hijau's Side

Happy Customers

>3 years proven track record in residential, off-grid, and commercial-industrial segments with >15 MWp installation



No	Nama Pelanggan	Pengguna	Tahun Penyelesaian	Kapasitas (MWp)
1	PT. Kalbio Global Medika	PT. Kalbio Global Medika	2018	0.20
2	Residential Projects	Residential Projects	2018	0.04
3	Equipment Distribution	Equipment Distribution	2018	0.14
4	PT. SCG Lightweight Concrete Indonesia	PT. SCG Lightweight Concrete Indonesia	2019	0.34
5	PT Bank Central Asia Tbk	Wisma Asia, PT Bank Central Asia Tbk	2019	0.01
6	KSO Summarecon Varitata Serpong & PT Serpong Cipta Kreasi	Summarecon Serpong (Vivaldi Cluster)	2019	0.24
7	KSO Summarecon Variatata Serpong & PT Serpong Cipta Kreasi	Summarecon Serpong (Verdi)	2019	0.18
8	PT. Summarecon Agung, Tbk	Summarecon Bekasi (Burgundy, Tahap 1)	2019	0.16
9	PT. Akuo Energy Indonesia	Solar Desalination, Desa Papagaran, NTT	2019	0.01
10	PT. Robert Bosch Indonesia	Klinik Desa Nimasi, NTT	2019	0.01
11	PT. Supraco Indonesia	Universitas Indonesia, Perpustakaan Pusat	2019	0.09
12	PT. Djarum	SMK NU Maaruf Kudus	2019	0.01
13	PT. Astra Modernland	Rumah Contoh, Asya Cluster, Jakarta Garden City	2019	0.01
14	PT. Supraco Indonesia	Universitas Indonesia, Fasilkom	2019	0.01

No	Nama Pelanggan	Pengguna	Tahun Penyelesaian	Kapasitas (MWp)
15	Residential Projects	Residential Projects	2019	0.09
16	Equipment Distribution	Equipment Distribution	2019	0.40
17	KSO Summarecon Variatata Serpong & PT. Serpong Cipta Kreasi	Summarecon Serpong (Rossini)	2020	0.20
18	PT. Summarecon Agung, Tbk	Summarecon Bekasi (Burgundy, Tahap 2)	2020	0.17
19	PT. Kalbe Farma, Tbk	Solar carport, PT. Kalbe Farma, Tbk, Cikarang	2020	0.20
20	PT. Djarum	SMK NU Maaruf jilid 2, Kudus	2020	0.01
21	PT. Bintang Toedjoe - PT. Sakafarma Laboratories - PT. Enseval Putera Megatrading, Tbk. - PT. Global Chemindo Megatrading, Tbk.	Kawasan Pabrik Deltamas Cikarang	2020	2,90
22	PT. Sumberdaya Sewatama	Pertamina, Balikpapan	2020 (berlangsung)	0,10
23	PT. Kalbe-Morinaga Indonesia	PT. Kalbe-Morinaga Indonesia, Karawang	2020 (berlangsung)	0,04
24	PT. Xurya Daya Indonesia	Lindeteves Trade Center, Jakarta	2020 (berlangsung)	0,82
25	PT. Brantas Adipraya	Pusat Muhammadiyah	2020	0,01
26	PT. Serpong Cipta Kreasi, KSO Summarecon Variatata	Summarecon Serpong (Mozart)	2020 (berlangsung)	0,22
27	Yayasan Satya Bhakti	Sekolah Santa Ursula Jakarta	2020	0,01

No	Nama Pelanggan	Pengguna	Tahun Penyelesaian	Kapasitas (MWp)
28	PT. Kahatex	PT. Kahatex	2020	0,16
29	PT. Bekasi Power	PT. Bekasi Power	2020 (berlangsung)	5,0
30	PT. Cikarang Listrindo	PT. Cikarang Listrindo	2020 (berlangsung)	1,0
31	PT. Bintang Toedjoe	PT. Bintang Toedjoe	2021 (berlangsung)	1,42
32	Agung Automall (9 Locations)	Agung Automall	2021 (berlangsung)	0,80
33	PT. Sampoerna Kayoe (2 Locations)	PT. Sampoerna Kayoe	2021 (berlangsung)	1,70
34	PT. Indo Tenaga Hijau	PT. Indo Tenaga Hijau	2021 (berlangsung)	1,30
35	PT. Riau Andalan Pulp & Paper	PT. Riau Andalan Pulp & Paper	2021 (berlangsung)	1,50
36	PT. Steel Pipe Industry of Indonesia Tbk.	PT. Steel Pipe Industry of Indonesia Tbk.	2021 (berlangsung)	0,90
37	PT. Tanjung Kreasi Parquet Industri	PT. Tanjung Kreasi Parquet Industri	2021 (berlangsung)	2,02
38	PT. Eco Paper Indonesia Tbk	PT. Eco Paper Indonesia Tbk	2021 (berlangsung)	3,60
			TOTAL	26,5



2 MWp of Rooftop Solar Photovoltaics Construction by ATW Solar Indonesia in PT. Tanjung Kreasi Parquet Industri, Temanggung



Thankyou

Energy Independence for Everyone



Contact Us
sales@atw-solar.id
+62 21 2765 8985
+62 878 2897 6527