

## EQUITY AND AMBITION

Jamie Wong

Nov 2024

[www.climateactiontracker.org](http://www.climateactiontracker.org)

**Paris Agreement**

**Overall rating**

**Equity**

**Ambition**

What did states agree?

# PARIS AGREEMENT

## Equity

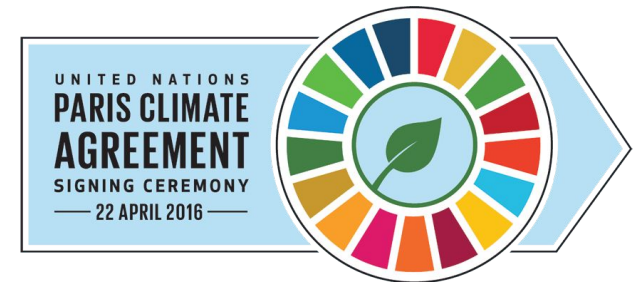
- “This Agreement will be implemented to reflect **equity** and the **principle of common but differentiated responsibilities and respective capabilities**, in the light of **different national circumstances**”

## Highest possible ambition

- “Each Party’s successive nationally determined contribution will represent a **progression** beyond the Party’s current nationally determined contribution and **reflect its highest possible ambition**” (with respect to national circumstances)

## Finance

- “**Developed country Parties shall provide financial resources to assist developing country Parties** with respect to both mitigation and adaptation in continuation of their existing obligations under the Convention”



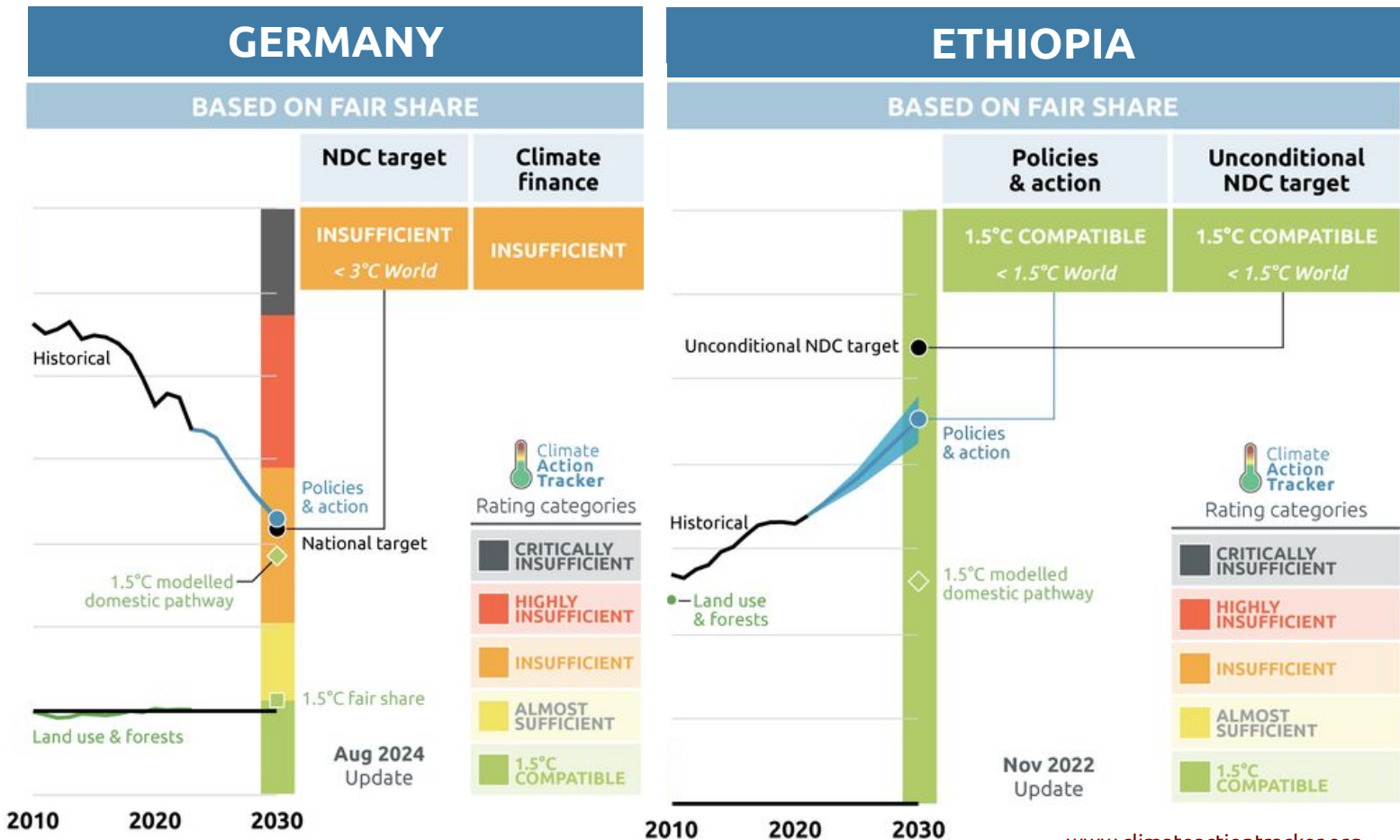
# Equity alone is not enough to limit warming to 1.5C

Countries with high share of cumulative emissions

- 1.5C fair share path not feasible domestically

Countries with low share of cumulative emissions

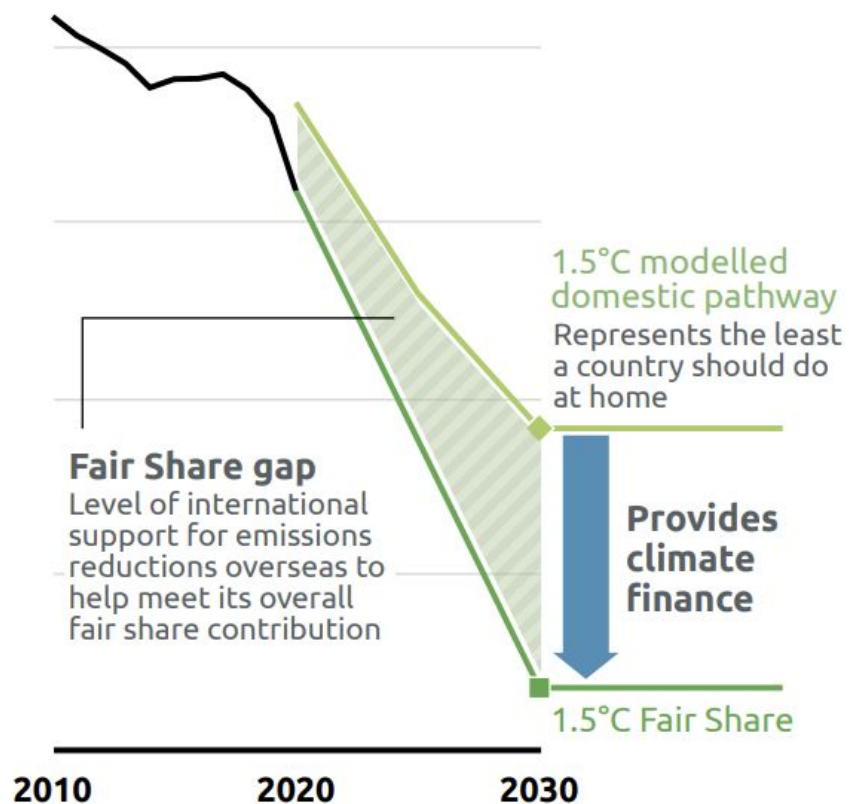
- 1.5C fair share path allows huge increases in emissions



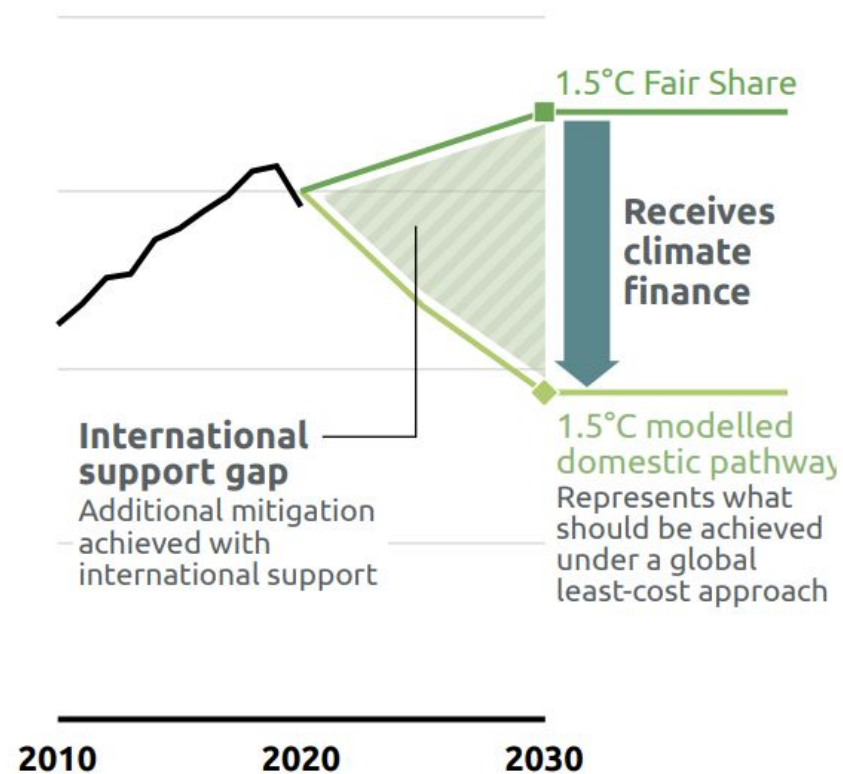
# CAT RATING METHODOLOGY

# Linking equity, ambition and finance

## Example of a climate finance donor European Union



## Example of a climate finance recipient India

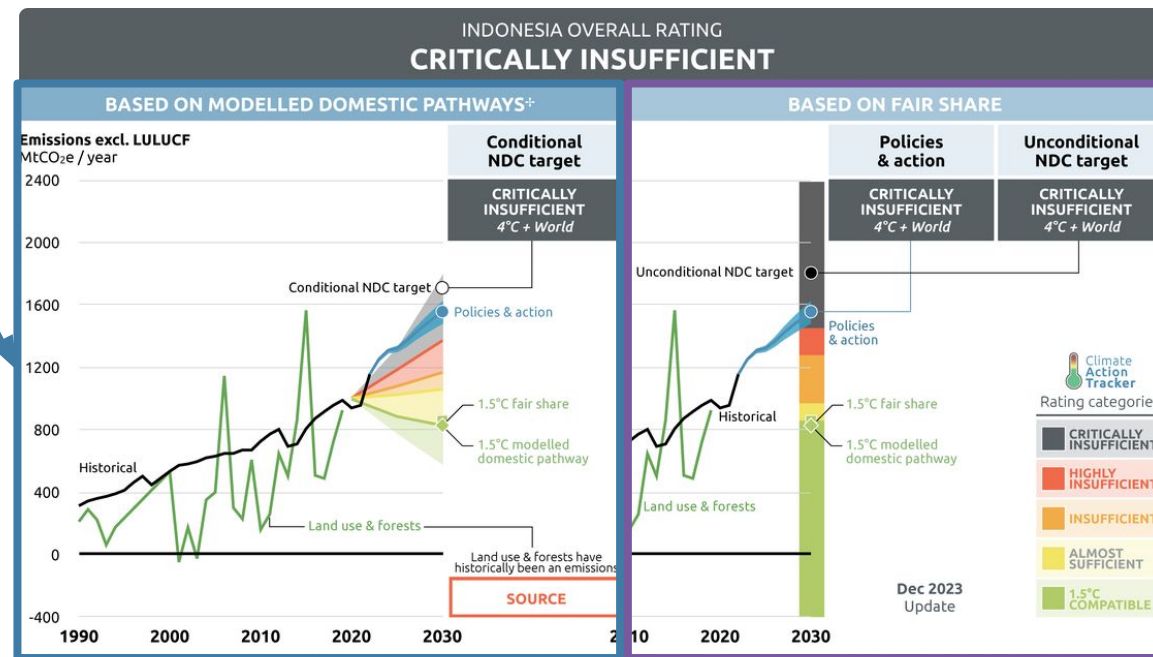


## Ambition

For developing countries, CAT only rates **conditional NDC** against **modelled domestic pathways**

## Equity

For developing countries, CAT rates projections and **unconditional NDC** against **equity**

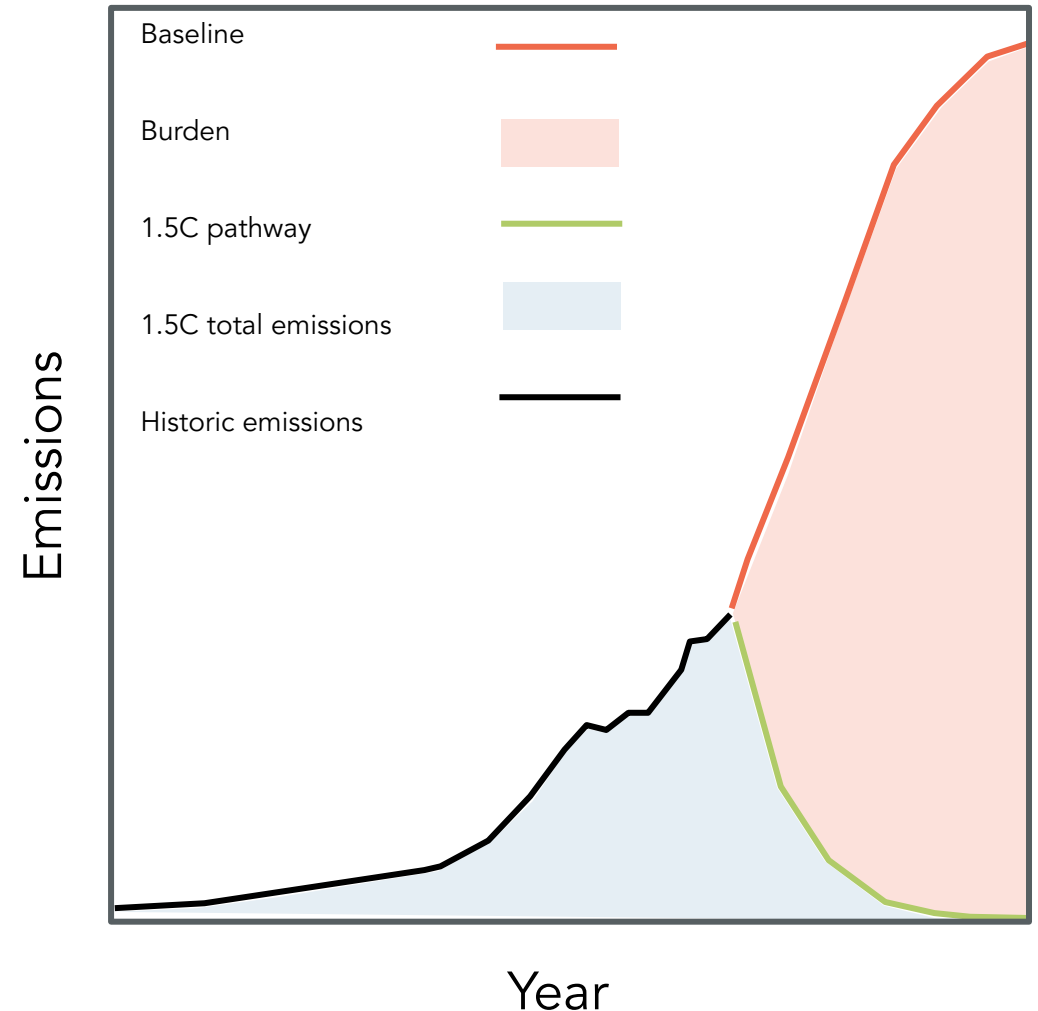




# EQUITY

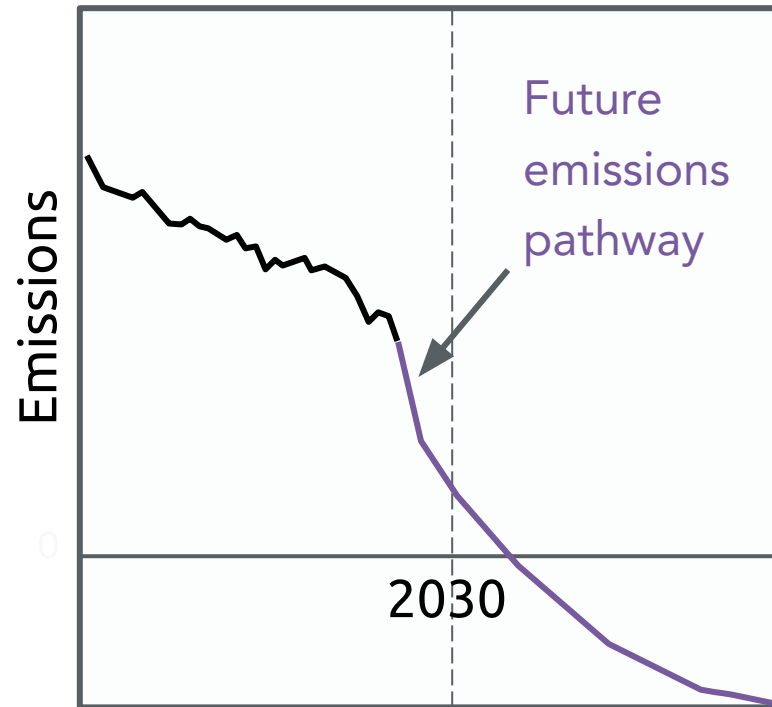
## What can we share?

- Share mitigation burden (red)
  - Difference between 'no action' baseline and 1.5C pathway
  - Issues:
    - Lack of suitable baseline scenarios
    - Country baselines inequitable
- Share emissions space (blue)
  - Historical emissions + 1.5C pathway
  - No inherent inequity, no assumption about baseline scenario



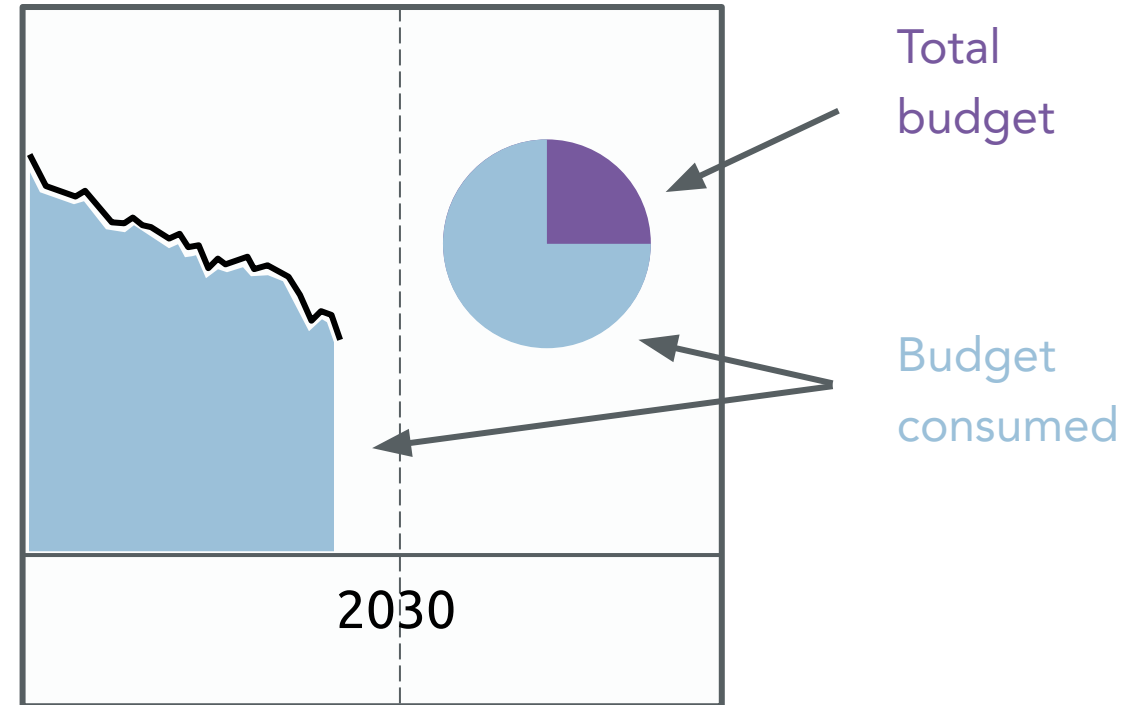
# Options for quantifying equity (2/3)

## Pathway



- Assumes shape of emissions pathway
- Can assess level of projections and targets
- No clear message on cumulative emissions

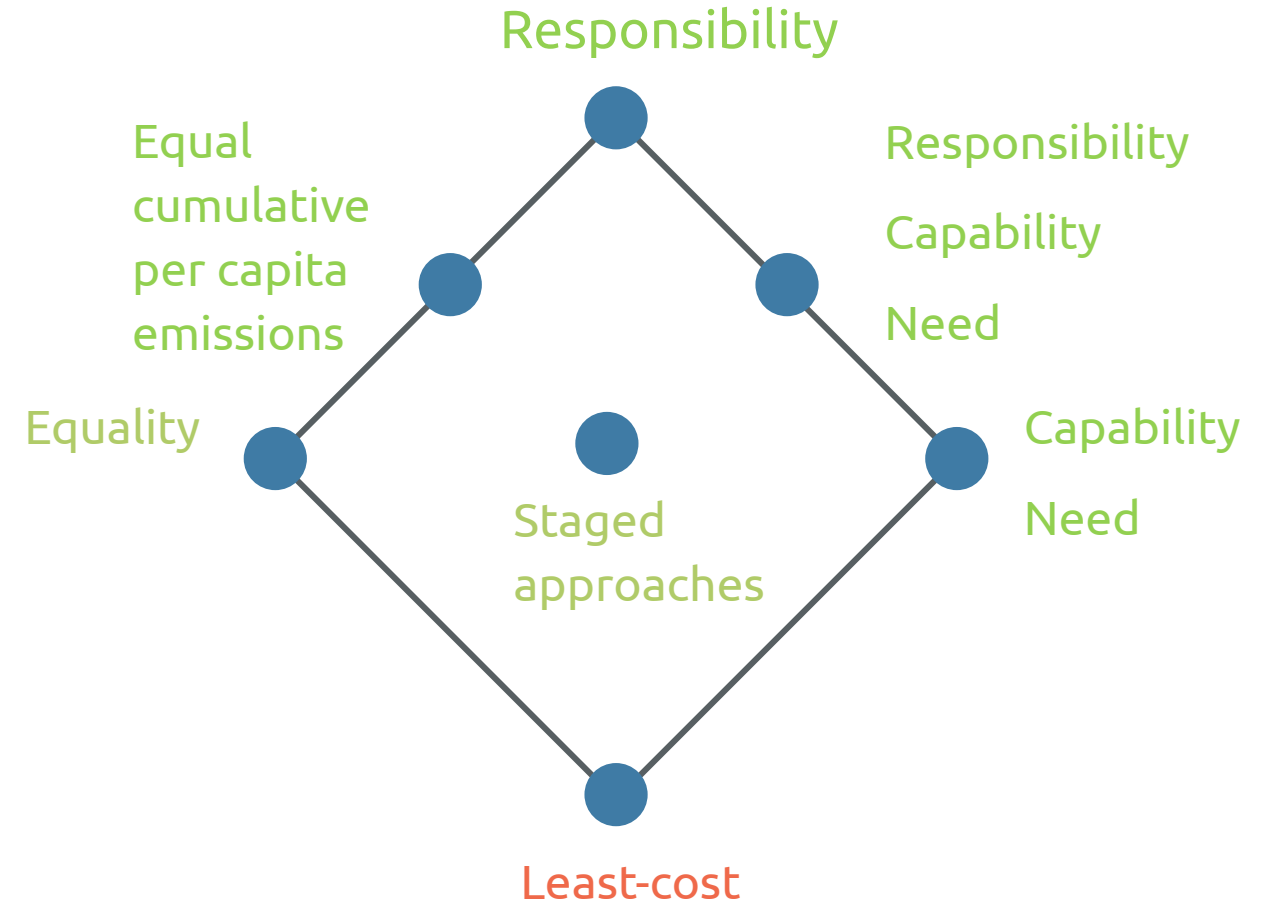
## Budget



- No assumption on how cumulative emissions are used over time
- No clear message on level of projections or interim targets

# Options for quantifying equity (3/3)

- Many perspectives on equity, many allocation methods
- Approaches focus on Responsibility, Capability, Equality, and combinations
- CAT removes some approaches (least-cost)



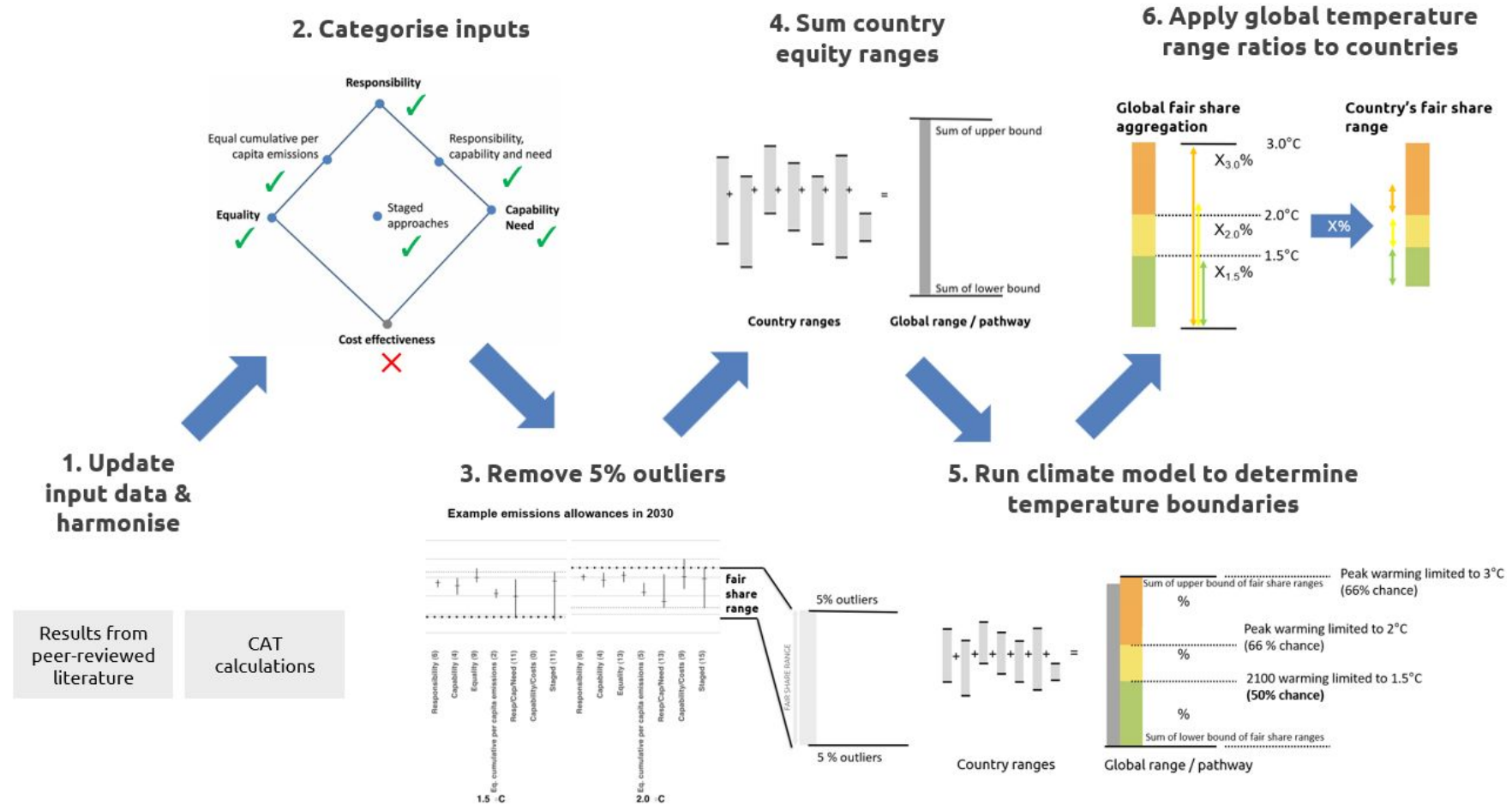
# CAT – Equity method

## Results from literature

- Range of approaches
- Range of parameters

## Burden sharing

## Continuous pathways



# AMBITION

## Top-down

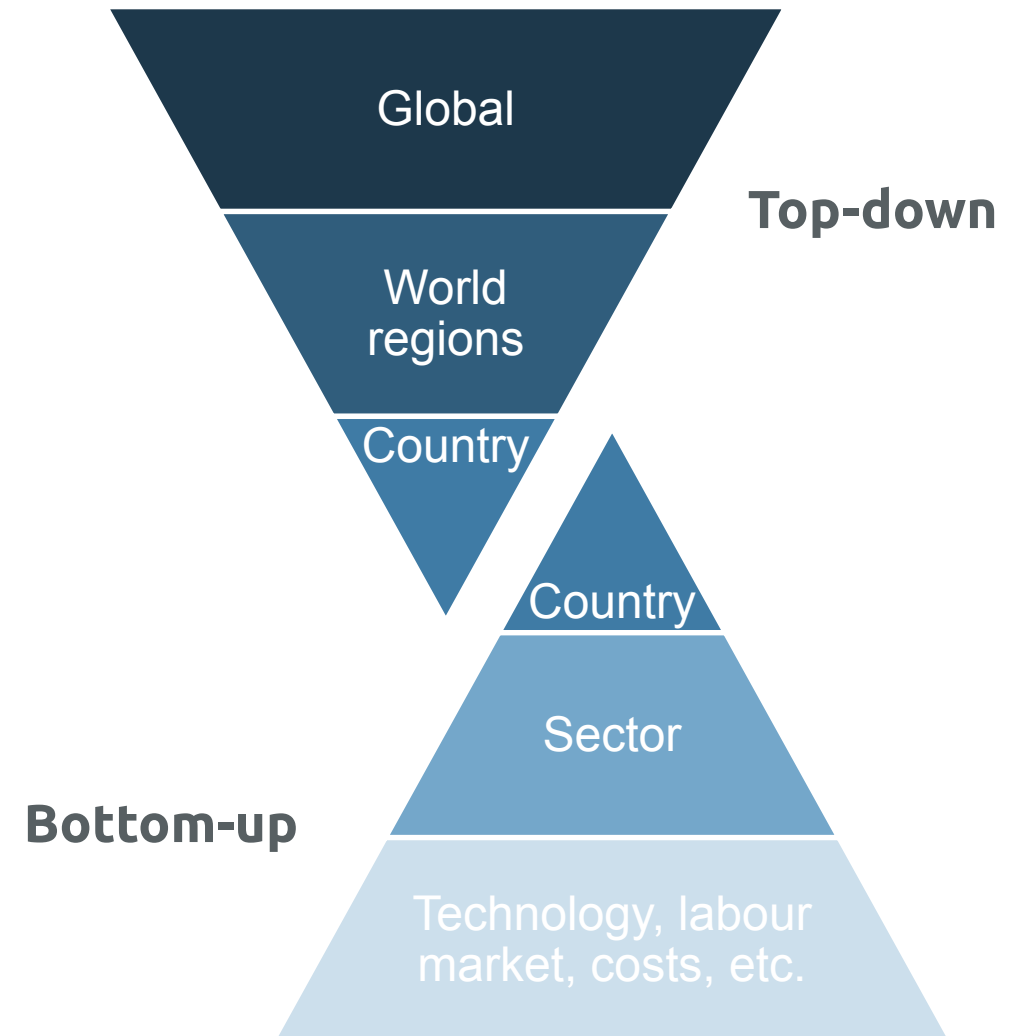
- Global and world regions, not detailed
- Countries linked in global pathway & can inform warming outcome
- Least-cost, not highest possible ambition
- Does not capture country conditions

## Bottom-up

- Captures country conditions, very detailed
- Limited comparability between countries (differing methods and assumptions)
- Not linked to global pathways & warming outcomes

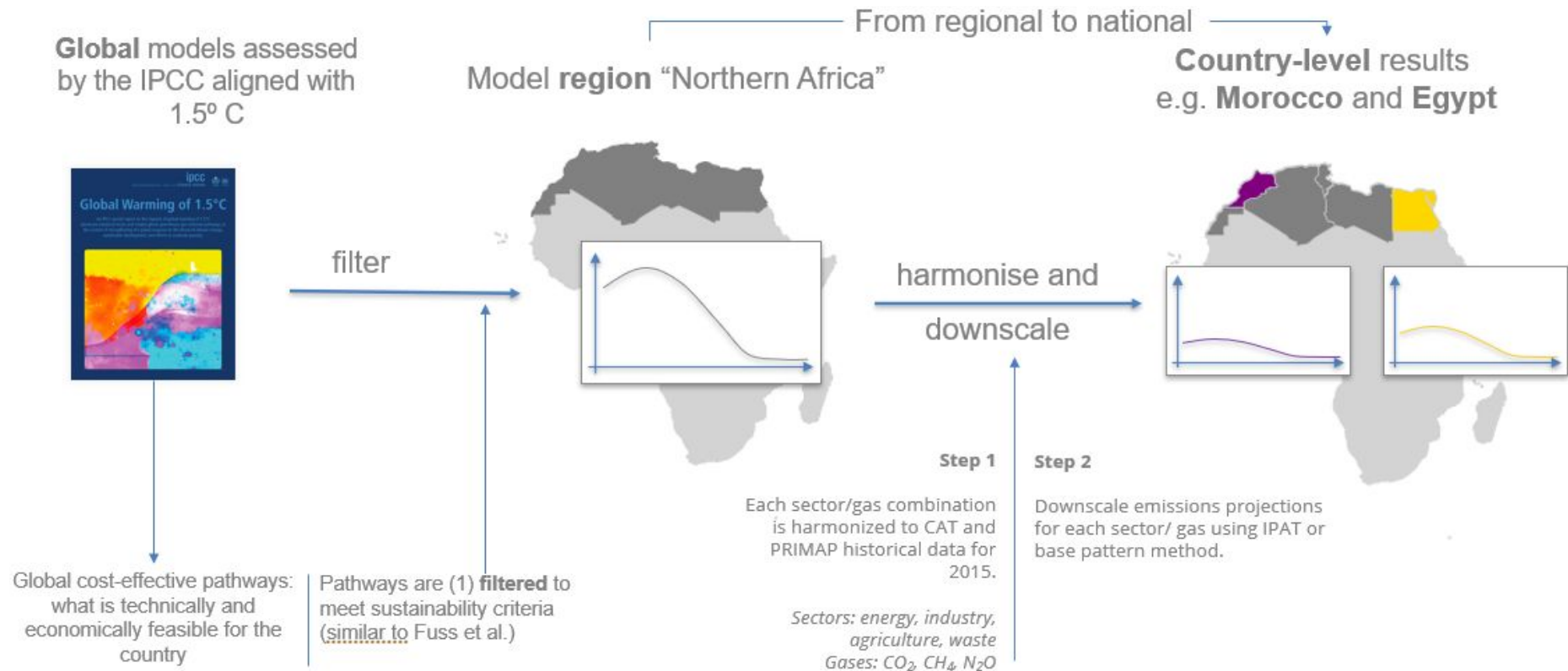
## Hybrid

- Various methods to combine



# CAT MDPs – ambitious domestic pathways

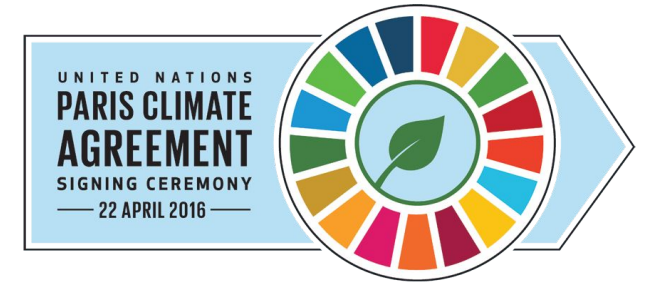
- Top-down
- Downscales global (least-cost) pathways





# MAIN MESSAGES

- Paris agreement is **equity + highest possible ambition + finance** (equity alone is not enough for 1.5C)
- **Different methods** to quantify equity, highest possible ambition and finance. Each with strengths and weaknesses.
- CAT rating methodology links **equity and ambitious pathways to finance**
- **CAT fair share** – burden sharing, pathways, range of approaches and parameters from literature
- **CAT modelled domestic pathways** – global least-cost pathways to specific warming levels (top-down)



# Discussion – Indonesia's SNDC

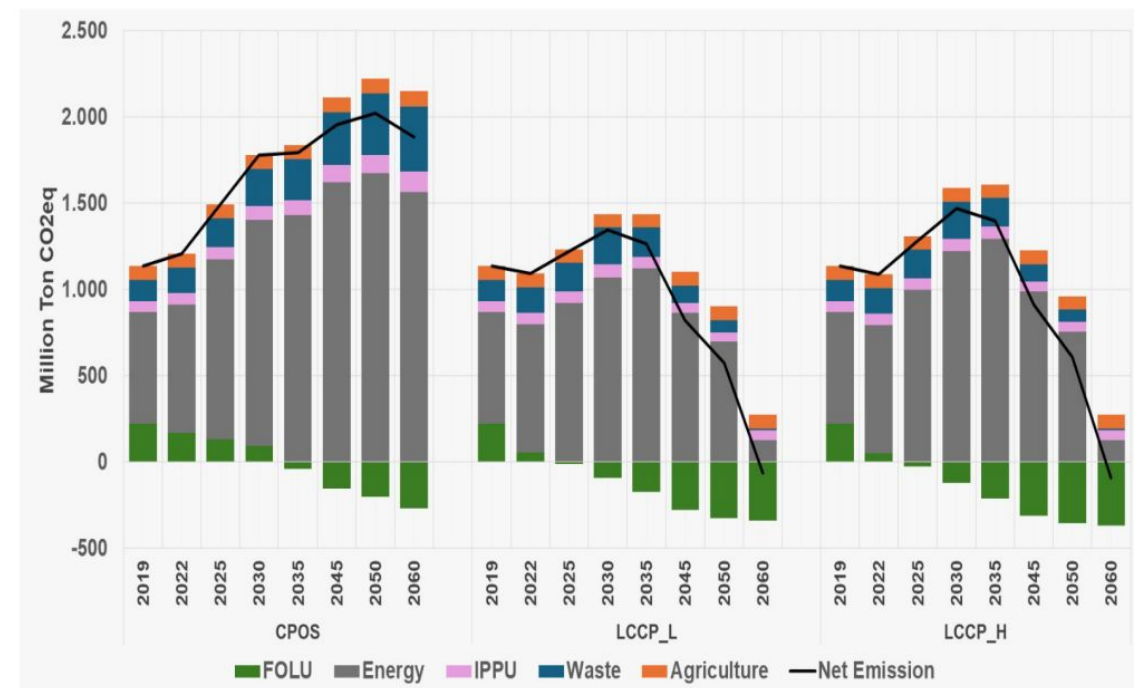
## SNDC unconditional target

- **Not aligned with equity**
- Peak emissions in 2050, >2 GtCO<sub>2</sub>e excl. LULUCF in 2060

## SNDC conditional target

- May be equitable but **may not be highest possible ambition** (but also lacks necessary climate finance)
- No reductions before 2030, peak in 2035, steep reductions till 2060
- **Steep reductions** – what are the measures and implications of this pathway? What are the risks?

Figure 1. Projected Emission from Each Sector Category, aligned with LTS LCCR 2050 and NZE 2060

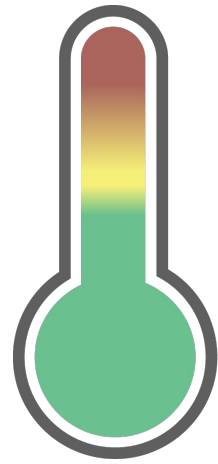


Thank you  
**QUESTIONS**

Jamie Wong

**Nov 2024**

[www.climateactiontracker.org](http://www.climateactiontracker.org)



# Climate Action Tracker

**NEW  
CLIMATE**  
INSTITUTE



**CLIMATE  
ANALYTICS**



**IESR**  
Institute for  
Essential Services  
Reform